

MTP® PRO FIELD TOOL

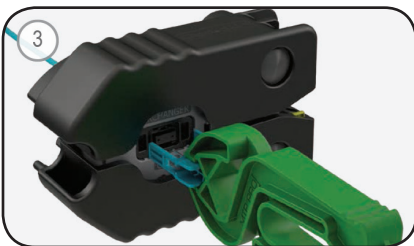
PIN CHANGE: Male to Female



Insert MTP® PRO Connector in the pin change slot until audible "Click". Do not compress the black handles.



Aligned pin exchanger on the opposite end of the pin change slot.

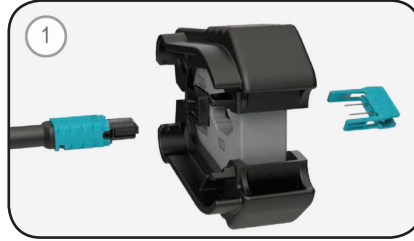


Slide the gripper tool onto the pin exchanger from the side. Compress the black MTP® PRO field tool handles.

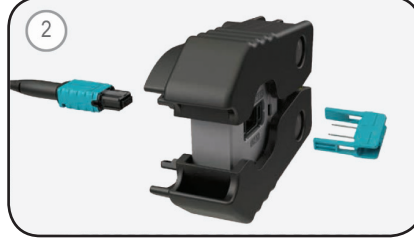


Compress the green gripper tool handles until they touch and pull the pin exchanger out.

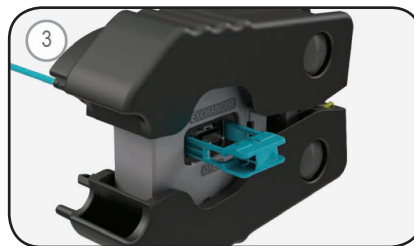
PIN CHANGE: Female to Male



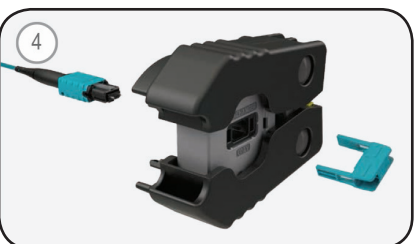
Insert MTP® PRO Connector in the pin change slot until audible "Click". Do not compress the black handles.



Aligned pin exchanger with the pins attached on the opposite end of the pin change slot.



Insert the pin exchanger into the opposite end of the pin change slot until audible "Click".

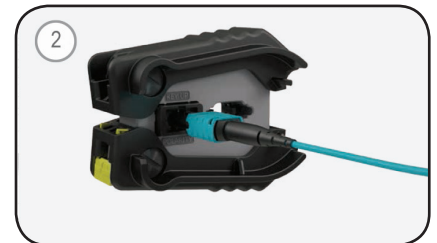


Pull out pin exchanger and verify insertion of the pins onto the MTP® PRO Connector.

POLARITY CHANGE:



MTP® PRO Connector key color factory setting is black.



Insert MTP® PRO Connector key up in polarity slot.



Remove MTP® PRO Connector from polarity slot. Black key is now hidden with gray key exposed on the opposite side.

Pictures courtesy of US Conec